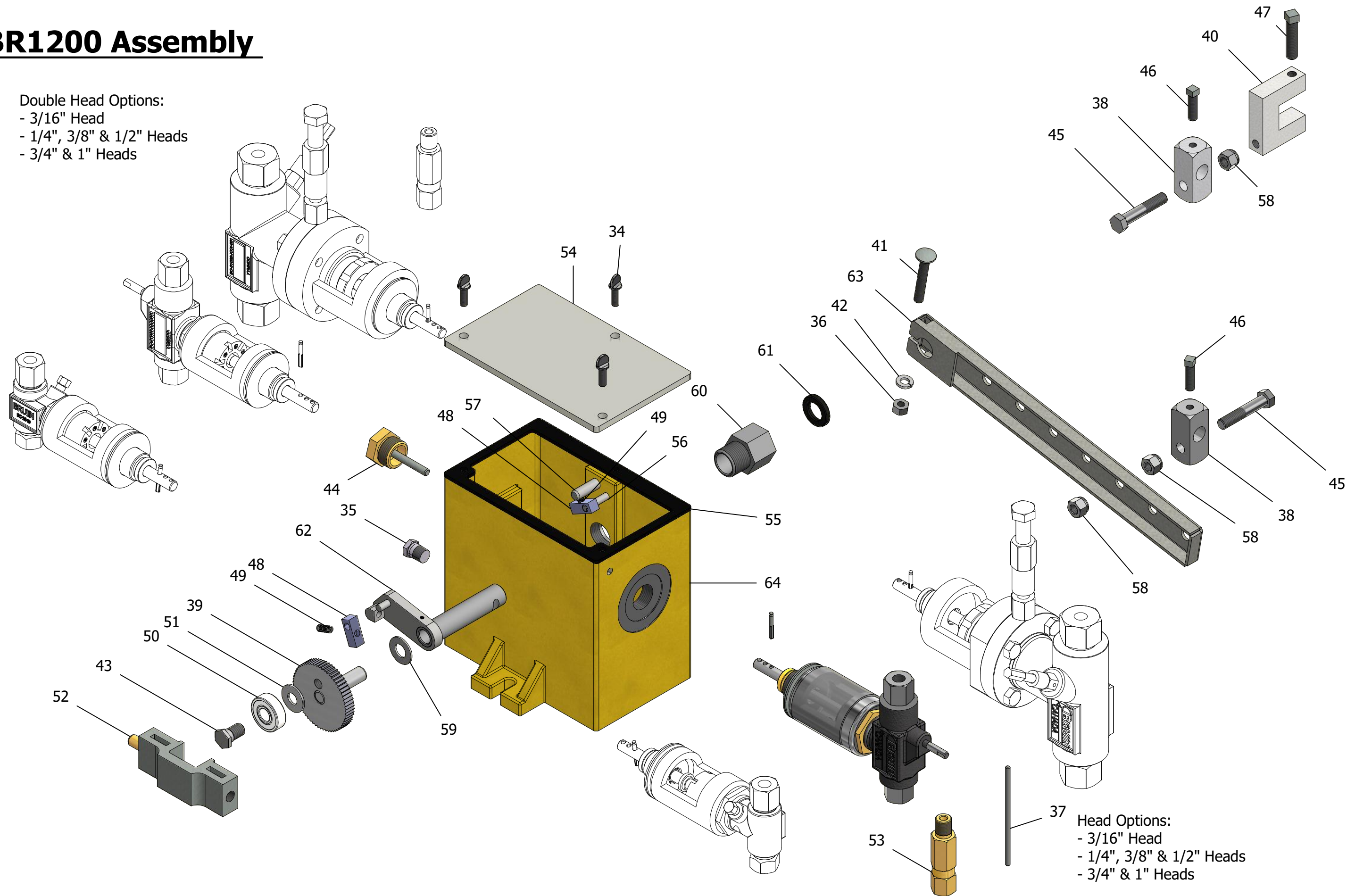


BR1200 Assembly

Double Head Options:
 - 3/16" Head
 - 1/4", 3/8" & 1/2" Heads
 - 3/4" & 1" Heads



Head Options:
 - 3/16" Head
 - 1/4", 3/8" & 1/2" Heads
 - 3/4" & 1" Heads

BR1200 ASSEMBLY

ITEM	QTY	TITLE	MATERIAL	STOCK NUMBER
34	3	WING SCREW - 1/4-20 x 3/4	Steel Cold Forged Zinc Chromate Plated	BA-0136
35	1	PIPE PLUG	Steel	BA-0138
36	1	HEX NUT	Carbon Steel Plated	BA-0144
37	1	GLAND WRENCH	Carbon Steel Plated	BA-0315
38	2	KNUCKLE	Aluminum	BA-0409
39	1	RATCHET ASSEMBLY	N/A	BA-0420
40	1	BEAM CLAMP	Cast Iron	BA-0423
41	1	CARRIAGE BOLT	Carbon Steel Plated	BA-0424
42	1	SPRING SPLIT LOCK WASHER	Carbon Steel Plated	BA-0425
43	1	BEARING BOLT	Carbon Steel	BA-0433
44*	1	GUIDE PLUG ASSEMBLY	N/A	BA-0434
45	2	HEX HEAD CAP SCREW	Carbon Steel	BA-0438
46	2	SET SCREW	Carbon Steel Plated	BA-0452
47	1	SQUARE HEAD SET SCREW	Carbon Steel Plated	BA-0453
48 r	2	RATCHET PAWL	Carbon Steel	BA-0455
49 r	2	PAWL SPRING	Stainless Steel	BA-0456
50 r	1	BEARING	Carbon Steel	BA-0457
51	1	FLAT WASHER	Carbon Steel Plated	BA-0746
52*	1	CROSSHEAD SIMPLEX	N/A	BA-0536
o**	1	CROSSHEAD DUPLEX	N/A	BA-0451
53*	1	CHECK VALVE 1/4"	Brass	BA-0676
o*	1	CHECK VALVE 1/4"	Stainless Steel	BA-0675
53**	2	CHECK VALVE 1/4"	Brass	BA-0676
o**	2	CHECK VALVE 1/4"	Stainless Steel	BA-0675
54	1	1200 COVER	Clear Plastic	BA-0960A
55	1	COVER GASKET	Buna N 60 Durometer	BA-0960B
56	1	CHECK PAWL SHAFT	Alloy Steel Case Hardened	BA-0985
57	1	CHECK PAWL SPRING SHAFT	Alloy Steel	BA-0986
58	3	HEX NUT	Carbon Steel Plated	BA-2207
59 r	1	WASHER	UHMW, White	BA-4251
60	1	SHAFT BEARING	Steel	BA-5199
61 r	1	SEAL	N/A	BA-5200
62	1	DRIVE SHAFT	Steel	BB-0066
63	1	LEVER ARM	Carbon Steel Plated	BB-0067
64	1	HOUSING 1200	Generic	BB-0091
r		Recommended Spare Parts		
o		Options		
*		Single Head Options		
**		Double Head Options		
		Ratchet Assembly	Includes: Item 39, 43, 50, and 51	BA-0537
		Knuckle Assembly	Includes: Item 38, 45, 46, and 58 (qty 2 ea.)	BA-0538
		Beam Clamp Assembly	Includes: Item 38, 40, 45, 46, 47, and 58 (qty 1 ea.)	BA-0700
		Cable		BA-0702